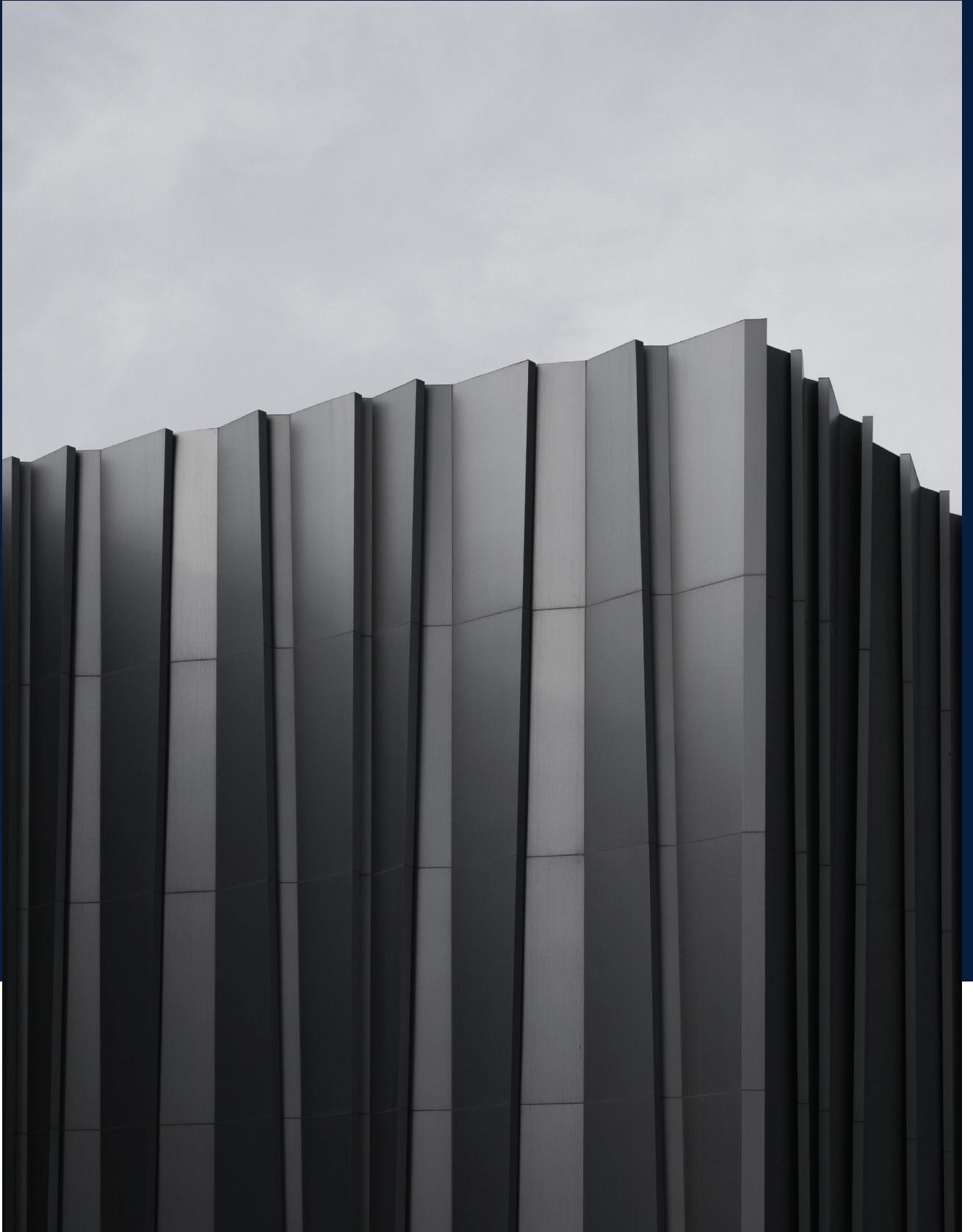




ARAB EAGLE
MODERN ENGINEERING CO



COMPANY PROFILE





CEO MESSAGE

“ As the head of a group committed to excellence, I take great pride in our work. Our dedication to safety and innovation makes us who we are. We are aware of how important insulation is in keeping pipes safe.

You can put your trust in a partner who appreciates both your achievement and the health of our common space when you work with Arab eagle modern engineering Co. We aspire to implement comprehensive thermal insulation solutions across the entirety of Egypt's industrial landscape, encompassing every manufacturing facility and maritime vessel within our nation. ”

OUR VISION.

In Arab Eagle Modern Engineering Co we are a “people first” company, our vision for our team is to expand the number of our workforce by time and contain larger families by offering more job opportunities. As our vision for our company is to be one of the leading construction company in Egypt and worldwide, spreading joy and happiness through our every project we undertake projects and creating a positive impact on the lives of our clients, employees, and communities.

Arab Eagle aims to lead and implement comprehensive thermal insulation solutions all over Egypt with the highest safety and sustainability standards.





OUR MISSION.

As “Arab EagleModern Engineering Co” we are on a quest to revolutionize the construction industry in Egypt by hunting down the perfect blend of dedication, quality, safety, integrity and of course fun. Our Mission is to provide superior construction services and to expand into new areas by leveraging our expertise, state-of-the-art technology, and a dedicated team of professionals. We strive for delivering high-quality projects that exceed our clients’ expectations, ensuring that their vision is brought to life, while adding our expertise to enhance the final outcome and bringing happiness to the communities we serve by creating sustainable and aesthetically pleasing structures that enhance people’s lives.

As a socially responsible company, we are dedicated to making a positive impact on the communities in which we operate. We hope to create job opportunities, support local businesses, and contribute to the overall development and welfare of our society.

We are driven by a passion for excellence and a genuine desire to make a positive impact on the construction industry in Egypt. Our large family of skilled hunters will go to great lengths to construct awe-inspiring buildings and leave a distinctive footprint in the field of construction on both Egyptian and global lands. We are committed to creating a work environment that is as fun and vibrant as a River cruise on the Egyptian Nile, where our employees can unleash their creativity while wearing stylish hard hats. Together, as a passionate team committed to excellence, we aim to be the preferred choice and brand name for all our clients’ needs in Egypt with a long-lasting legacy.

We want to build a brighter future for Egypt, one construction project at a time.

We are dedicated to providing excellent heat insulation services that are suited to the unique requirements of businesses and industries. We put safety, effectiveness, and environmental responsibility first through cutting-edge technology and persistent dedication, which helps our clients’ activities succeed and last for a long time.

VALUES

Statement





PASSION FOR EXCELLENCE



CUSTOMER FOCUSED



TEAMWORK



INTEGRITY



WILLINGNESS TO GROW



TRANSPARENCY



PROFESSIONALISM



SAFETY



MAKE A DIFFERENCE



OUR INDUSTRIAL SECTOR

Thermal Insulation Department

The company executes thermal insulation works for factories, with one of the most significant being the Ezz El-Dekheila Subsidiaries Companies' factories. The works include providing skilled and experienced labor in the field of thermal insulation and supplying all materials required to complete the assigned work according to the required specifications. The company adheres to industry standards and industrial safety regulations, and executes the work according to the specified schedule and required quality.

High Scaffolding Department

The company supplies the required metal scaffolding for the work, which includes the Caplock metal scaffolding, known for being one of the best and highest quality metal scaffolding types. The company provides skilled and experienced labor to install the scaffolding according to industrial safety regulations and monitors the work with the responsible parties until the scaffolding work is completed. The technicians also dismantle the scaffolding once the work is finished.

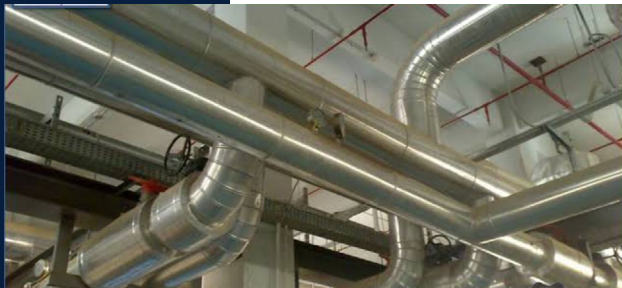
We have the capability to work in all areas and companies with the required quantities and with the highest quality and efficiency.

Petroleum Sector

Our company is also certified by the petroleum sector, underscoring our expertise in handling insulation projects within this critical industry. Our experience includes working with various types of insulation materials suitable for the demanding conditions of petroleum processing and storage, such as high-temperature applications and corrosive environments. This certification reflects our commitment to quality and our ability to meet the stringent requirements of the petroleum industry.

OUR SERVICES

In Arab Eagle Modern Engineering Co, our Thermal Insulation Department offers comprehensive insulation solutions specifically designed for factories and industrial facilities. We handle a variety of project types, including new installations, ongoing maintenance, and upgrades to existing insulation systems. Our specializations include providing skilled and experienced labor for all insulation projects and supplying all necessary materials to meet the required project specifications.



MATERIALS & EQUIPMENT

Materials Used:

- Aluminum rolls of various types.
- Rock wool rolls of various types.
- Glass wool rolls of various types.
- Fire bricks of various types.

Equipment Utilized:

- Aluminum rolling machines of various sizes.
- Orniza aluminum forming machines.



PROCESS & METHODOLOGY

Project Execution Process:

- Initial Consultation and Site Assessment: Detailed analysis of client needs and site conditions.
- Project Planning and Material Procurement: Strategic planning to ensure timely delivery and availability of materials.
- Installation and Quality Assurance: Skilled labor executes the installation with strict adherence to quality standards.
- Project Completion and Handover: Final inspections and handover to clients, ensuring satisfaction and compliance.

Quality Control Measures: Rigorous quality checks and adherence to industry standards.

Safety Protocols: Compliance with industrial safety regulations to protect workers and site integrity.



OUR SKILLED WORKFORCE

- **Labor Force Profile:** Skilled and experienced professionals specializing in thermal insulation.
- **Training and Certifications:** Ongoing training programs and certifications to ensure up-to-date skills and knowledge.
- **Professional Development:** Commitment to continuous learning and improvement.



CAPABILITIES & CAPACITY

Project Capacity: Ability to handle projects of varying sizes and complexities across different regions.

Geographic Reach: Capability to operate in diverse locations, ensuring local compliance and efficiency.

Quality and Efficiency: Commitment to delivering projects on time, within budget, and to the highest standards. Compliance with industrial safety regulations to protect workers and site integrity.



OUR KEY PROJECTS & CLIENTS

1. Ezz Rolling Mills (Direct Reduction Plant - DRP)

A facility dedicated to producing high-quality steel using the direct reduction process, enhancing efficiency and output.



OUR KEY PROJECTS & CLIENTS

2. Ezz Flat Steel Manufacturing (EFS)

Specializes in producing flat steel products, known for their precision and adherence to demanding international standards.



OUR KEY PROJECTS & CLIENTS

3. Hadid for Industry, Trading, and Contracting Company - Contrasteel


A facility focusing on the industry, trading, and contracting sectors, playing a critical role in the steel manufacturing and distribution network.





CONTACT US

 +2 272 589 24  +201281915205

 Info@arabeaglemodernengineering.com

 Apt.92, 9th & 10th Floor, Sama Towers, Maadi

 www.arabeagle-engineering.com